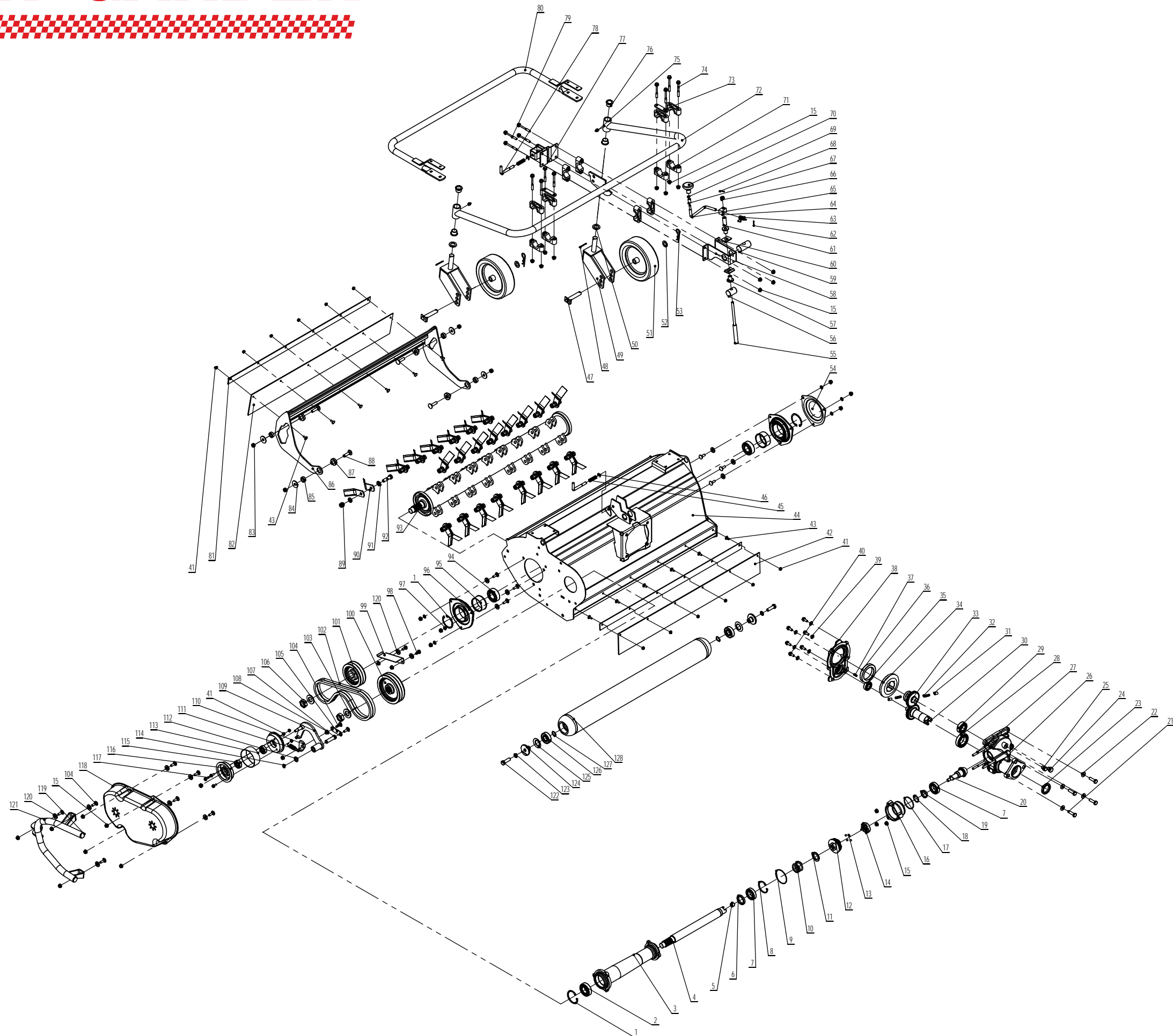


# SPORT GARDEN



## TRITURADORA MTC



| Part No. | HONGYUE Code ref. | English name                           | specification | Qty |
|----------|-------------------|----------------------------------------|---------------|-----|
| 1        | 5070200111        | Circlip for hole type B                | 62            | 3   |
| 2        | 5110100150        | deep groove ball bearing               | 6206          | 1   |
| 3        | 404361320000      | Connecting sleeve                      |               | 1   |
| 4        | 404561300000      | output shaft                           |               | 1   |
| 5        | 5110200750        | Needle roller bearings                 | Φ12*Φ18*12    | 1   |
| 6        | 5120100220        | oil seal                               | Φ35*Φ47*7     | 1   |
| 7        | 5110100110        | Deep groove ball bearing               | 6006          | 2   |
| 8        | 5070200091        | Circlip for hole type B                | 55            | 1   |
| 9        | 5130100340        | O type circle                          | Φ67*Φ2.65     | 1   |
| 10       | 401861300000      | brake spring                           |               | 1   |
| 11       | 406061210000      | Spring seat                            |               | 1   |
| 12       | 406661300000      | copper connector                       |               | 1   |
| 13       | 5180100010        | steel ball                             | 8             | 4   |
| 14       | 408161200000      | pawl                                   |               | 1   |
| 15       | 5040300720        | Non metallic insert Hexagon lock nut   | M8            | 31  |
| 16       | 408361300000      | Combined shaft seat                    |               | 1   |
| 17       | 5130100330        | O type circle                          | Φ56*Φ2.65     | 1   |
| 18       | 401761300000      | Circlip for shaft type A               | 30            | 1   |
| 19       | 404161300000      | Conical gear shaft sleeve              |               | 1   |
| 20       | 404061300000      | Bevel gear shaft                       |               | 1   |
| 21       | 501020103520      | Six hexagon head bolts with fine teeth | M10(1.25)×35  | 4   |
| 22       | 506060610         | Conical spring washer                  | Φ10.5*Φ23*2.  | 4   |
| 23       | 5120100210        | oil seal                               | Φ38*Φ52*7     | 1   |
| 24       | 409161400000      | Pressure relief bolt                   | 1/4           | 1   |
| 25       | 409161400000      | Bleed bolt                             | 1/4           | 1   |
| 26       | 407061300000      | gear-box                               |               | 1   |
| 27       | 5020100720        | Stud BM = 1.5D                         | M8×80         | 3   |
| 28       | 5110100730        | Deep groove ball bearing               | 6008          | 1   |
| 29       | 5110100100        | Deep groove ball bearing               | 6205          | 1   |
| 30       | 403661300000      | Input 35 gear shaft                    |               | 1   |
| 31       | 5090100324        | One way clutch cylinder pin            | Φ10*18        | 2   |
| 32       | 401161200000      | One way clutch spring 10 ring          |               | 2   |
| 33       | 403761300000      | One way gear shaft 35 teeth            |               | 1   |
| 34       | 403861300000      | Spiral bevel gear                      |               | 1   |
| 35       | 5110100530        | Deep groove ball bearing               | 6004          | 1   |
| 36       | 15110100140       | Deep groove ball bearing               | 6913          | 1   |
| 37       | 5090100302        | Positioning pin                        | Φ8*18         | 2   |
| 38       | 400861320000      | gearbox cover                          |               | 1   |
| 39       | 506060600         | Conical spring washer                  | Φ8.4*Φ18*2    | 6   |
| 40       | 5010100702020     | Six hexagon head flange bolts          | M8×20         | 6   |
| 41       | 5040500620        | Hexagon flange nuts                    | M6            | 15  |
| 42       | 406461300000      | After rubber skin                      |               | 1   |
| 43       | 5011000601620     | Mushroom head square neck bolt         | M6×16         | 12  |
| 44       | 402761300000      | bucket                                 |               | 1   |
| 45       | 403561410000      | Reset spring                           |               | 2   |
| 46       | 5070500871        | Circlip                                | 9             | 2   |
| 47       | 405761300000      | axle                                   |               | 2   |
| 48       | 5090300442        | Split type A                           | 3.2×36        | 2   |
| 49       | 403561300000      | Wheel bracket                          |               | 2   |
| 50       | 5050100502        | flat gasket                            | Φ21*Φ34*3     | 2   |
| 51       | 406361300000      | Gravity wheel                          |               | 2   |
| 52       | 5050100232        | flat gasket                            | Φ17*Φ30*2.5   | 2   |

|     |               |                                             |            |    |
|-----|---------------|---------------------------------------------|------------|----|
| 53  | 5090500882    | Hairpin pin                                 | Φ3.5*60    | 2  |
| 54  | 400961300000  | Bearing seat end cover                      |            | 1  |
| 55  | 403261300000  | Wire rod                                    |            | 1  |
| 56  | 405261300000  | Copper nut                                  |            | 1  |
| 57  | 409461310000  | T shaped spacer                             |            | 2  |
| 58  | 403061300000  | Height adjusting and fixing support         |            | 1  |
| 59  | 405361300000  | Through mandrel                             |            | 1  |
| 60  | 406061300000  | Spring seat                                 |            | 2  |
| 61  | 405661300000  | axle sleeve                                 |            | 1  |
| 62  | 5090300412    | Split type A                                | 2×20       | 1  |
| 63  | 402261300000  | A torsion spring                            |            | 1  |
| 64  | 405461300000  | universal coupling                          |            | 1  |
| 65  | 401561300000  | Crank                                       |            | 1  |
| 66  | 50406092      | Hexagon slotted thin nut                    | M10        | 1  |
| 67  | 409761310000  | Handle set                                  |            | 1  |
| 68  | 5090500800    | Elastic cylinder pin roll system heavy duty | 3×22       | 1  |
| 69  | 5070501211    | Circlip                                     | 6          | 1  |
| 70  | 409861300000  | Crank handle                                |            | 1  |
| 71  | 406161300000  | Wheel mounting rod fixing block             |            | 12 |
| 72  | 403461300000  | Wheel connecting rod                        |            | 1  |
| 73  | 409561310000  | Reinforced plastic bearing                  |            | 2  |
| 74  | 5010100707520 | Six hexagon head flange bolts               | M8×75      | 4  |
| 75  | 5150100050    | grease fitting                              | M10        | 2  |
| 76  | 402461250000  | Plastic bearing                             |            | 4  |
| 77  | 403161300000  | Wheel adjusting bracket                     |            | 1  |
| 78  | 401261410000  | spacer pin                                  |            | 2  |
| 79  | 5010100707020 | Six hexagon head flange bolts (enlarged)    | M8×70      | 8  |
| 80  | 403361310000  | U type bumper                               |            | 1  |
| 81  | 406561300000  | Rubber plate strip                          |            | 2  |
| 82  | 405961300000  | Front rubber sheet                          |            | 1  |
| 83  | 5040300920    | Nonmetallic six-angled locknut with         | M10        | 5  |
| 84  | 5050100582    | flat washer                                 | Φ11*Φ34*3  | 4  |
| 85  | 410061300000  | Dichotomanthes shock set                    |            | 4  |
| 86  | 402861300000  | front guard                                 |            | 1  |
| 87  | 405061300000  | Protective cover spacer                     |            | 4  |
| 88  | 5011000904020 | Mushroom head square neck bolt              | M10×40     | 4  |
| 89  | 5040301220    | Non metallic insert Hexagon lock nut        | M12        | 23 |
| 90  | 401461300000  | blade                                       |            | 46 |
| 91  | 409961300000  | Blade washer                                | Φ13*Φ22*4  | 46 |
| 92  | 5010201204520 | Hexagon headed bolt                         | M12×45     | 23 |
| 93  | 405161300000  | Cutter mounting shaft                       |            | 1  |
| 94  | 51101001890   | Deep groove ball bearing                    | 62206      | 2  |
| 95  | 409061310000  | Bearing sleeve                              |            | 2  |
| 96  | 409061320000  | Bearing seat                                |            | 2  |
| 97  | 5050100032    | flat washer                                 | Φ9*Φ16*1.6 | 6  |
| 98  | 5011000702020 | half-round head square neck bolt            | M8×20      | 2  |
| 99  | 402361300000  | Belt guard                                  |            | 1  |
| 100 | 404661300000  | Large belt                                  |            | 1  |
| 101 | 408561300000  | Small belt pulley                           |            | 1  |
| 102 | 408661300000  | Triangular belt                             |            | 2  |
| 103 | 5050100092    | flat gasket                                 | Φ24*Φ44*4  | 2  |
| 104 | 5011000702520 | Mushroom head square neck bolt              | M8×25      | 15 |
| 105 | 400761300000  | Double cushion                              |            | 1  |

|     |               |                                  |             |    |
|-----|---------------|----------------------------------|-------------|----|
| 106 | 5040102520    | Hexagon thin nuts                | M24X2       | 2  |
| 107 | 404861300000  | Up tight wheel bracket pin shaft |             | 1  |
| 108 | 404961300000  | Up tight cam T shaped spacer     |             | 1  |
| 109 | 402461300000  | Up tight wheel bracket           |             | 1  |
| 110 | 402561300000  | Up tight block                   |             | 1  |
| 111 | 402161300000  | Tension spring block             |             | 1  |
| 112 | 5050100482    | flat washer                      | Φ15*Φ24*2.5 | 1  |
| 113 | 404761300000  | Tension wheel rim                |             | 1  |
| 114 | 5070100301    | Circlip for shaft type A         | 14          | 1  |
| 115 | 15110100170   | Deep groove ball bearing         | 6301-2Z     | 2  |
| 116 | 406761300000  | Up tight wheel bearing seat      |             | 2  |
| 117 | 5010100601620 | Six hexagon head flange bolts    | M6×16       | 3  |
| 118 | 405861300000  | protection cover                 |             | 1  |
| 119 | 409661300000  | Protective cover bumper          |             | 2  |
| 120 | 5050100832    | Flat washer                      | Φ13*Φ24*2.5 | 15 |
| 121 | 402661310000  | Belt guard                       |             | 1  |
| 122 | 501020004020  | Hexagon headed bolt              | M12×40      | 2  |
| 123 | 5050100472    | Flat washer                      | Φ13*Φ20*2   | 2  |
| 124 | 409361300000  | Roller seat                      |             | 2  |
| 125 |               |                                  |             |    |
| 126 | 5110100191    | Deep groove ball bearing         | 6304-2Z     | 2  |
| 127 | 5070100311    | Circlip for shaft type B         | 20          | 2  |
| 128 | 402961300000  | Flat roller                      |             | 1  |