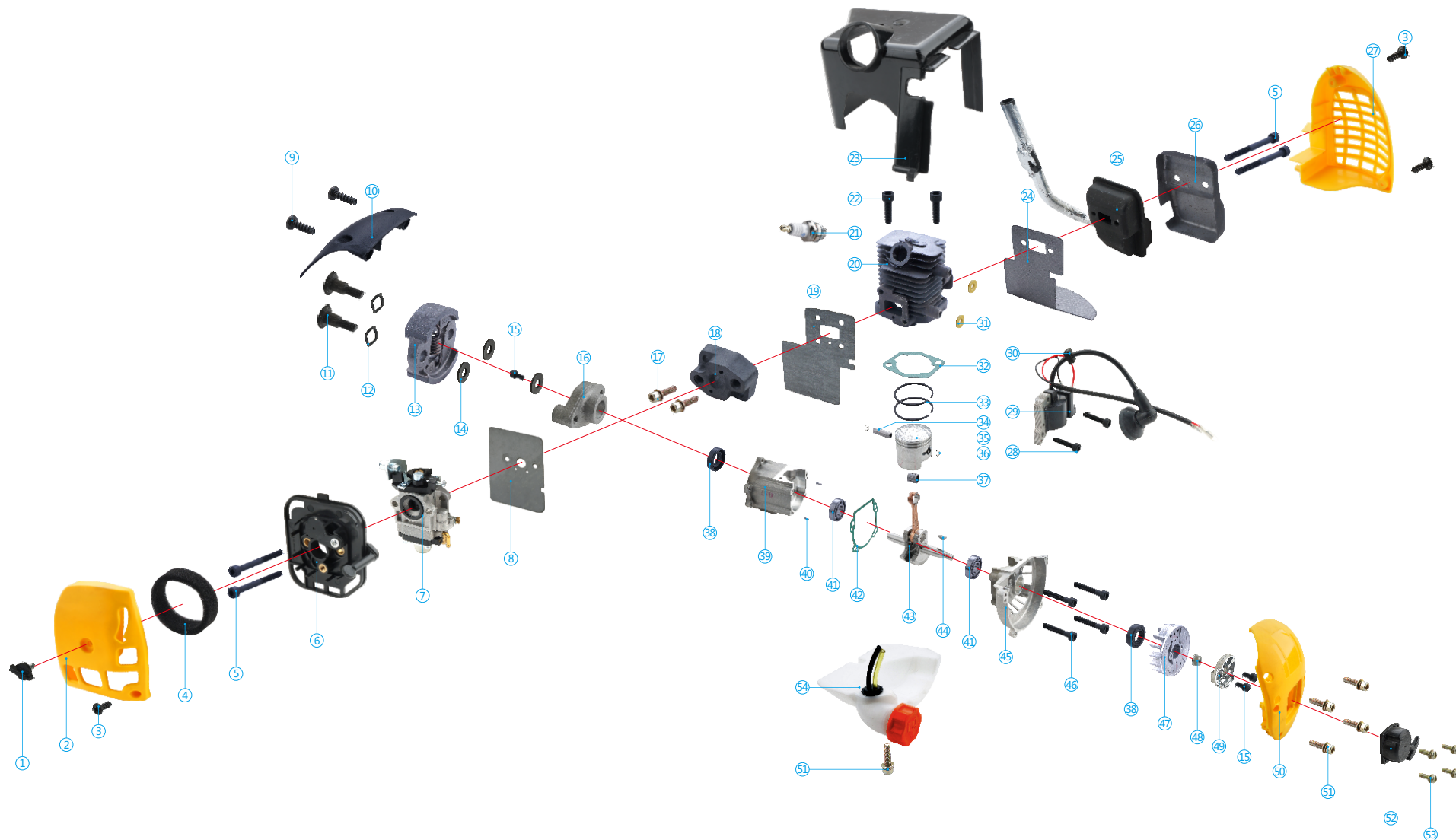


1E32F-B

1E32F-B GASOLINE ENGINE EXPLODED VIEW



1E32F-B

1E32F-B GASOLINE ENGINEPARTSLIST

(No.)	REF.	NAME	(Qty)
1	M234TN1-6	SCREW	1
2	M234TN1-6	COVER, AIR FILTER	1
3	M234TN1-6	BOLT ST4x10	3
4	M234TN1-6	ELEMENT	1
5	M234TN1-6	BOLT M5x50	4
6	M234TN1-6	BODY	1
7	M234TN7	CARBURATOR	1
8	M234TN8	GASKET	1
9		BOLT ST5x14	2
10		COVER	1
11	M234TN11	SCREW	2
12	M234TN12	WASHER	2
13	M234TN13	CLUTCH	1
14	M234TN14	WASHER Φ6	3
15		BOLT M6x12	3
16		PLATE, CLUTCH	1
17		BOLT M5x20	2
18	M234TN18	INSULATOR	1
19	M234TN19	GASKET, INSULATOR	1
20	M234TN20	CYLINDER	1
21		SPARK PLUG	1
22		BOLT M5x20	2
23	M234TN23	COVER,CYLINDER	1
24	M234TN24	GASKET,MUFFLER	1
25	M234TN25	MUFFLER	1
26	M234TN26	COVER	1
27	M234TN27	COVER, MUFFLER	1

(No.)	REF.	NAME	(Qty)
28		BOLT M4x20	2
29	M234TN29	IGNITON COIL	1
30		CLIP	1
31	M234TN31	GASKET	2
32	M234TN32	GASKET,CYLINDER	1
33	M234TN33	PISTON RING	2
34	M234TN34	PISTON PIN	1
35	M234TN35	PISTON	1
36	M234TN36	SNAP RING	2
37	M234TN37	NEEDLE BEARING	1
38		OIL SEAL Φ12xΦ22x7	2
39		LEFT CRANKCASE	1
40		PIN	2
41		BEARING	2
42		GASKET,	1
43		CRANKSHAFT	1
44		KEY	1
45		RIGHT CRANKCASE	1
46		BOLT M5x30	4
47	M234TN47	FLYWHEEL	1
48		FLANGE NUT M8	1
49	M234TN49	STARTER PULLEY	1
50	M234TN50	SIDE COVER	1
51		BOLT M5x18	5
52	M234TN52	STARTER ASSY	1
53		BOLT M4x14	4
54	M234TN54	FUEL TANK ASSY	1